



CONNECTIVITY GUIDE

HKEx Orion Market Data Platform Derivatives Market Products

Version 1.0

2 August 2013

© Copyright 2013 HKEx

All Rights Reserved

DOCUMENT HISTORY

Document Version	Date	Change Description
1.0	2 August 2013	First issue

Contents

1.	Overview	2
2.	Configuration Information	3
2.1	Production Environment Connectivity Details	5
2.1.1	OMD Derivatives Standard (non-SOM) (conflated).....	5
2.1.2	OMD Derivatives Standard (SOM) (conflated).....	7
2.1.3	OMD Derivatives Premium (non-SOM) (streaming).....	9
2.1.4	OMD Derivatives Premium (SOM) (streaming).....	11
2.1.5	OMD Derivatives Full Tick (non-SOM) (streaming).....	13
2.1.6	OMD Derivatives Full Tick (SOM) (streaming).....	15
2.1.7	OMD Derivatives Trade Tick (non-SOM) (streaming).....	17
2.1.8	OMD Derivatives Trade Tick (SOM) (streaming).....	18
2.1.9	HKEx OMD Retransmission Unicast Connectivity	19
2.2	Open/Readiness Test Environment Connectivity Details	20
2.2.1	OMD Derivatives Standard (non-SOM) (conflated).....	20
2.2.2	OMD Derivatives Standard (SOM) (conflated).....	21
2.2.3	OMD Derivatives Premium (non-SOM) (streaming).....	23
2.2.4	OMD Derivatives Premium (SOM) (streaming).....	24
2.2.5	OMD Derivatives Full Tick (non-SOM) (streaming).....	25
2.2.6	OMD Derivatives Full Tick (SOM) (streaming).....	27
2.2.7	OMD Derivatives Trade Tick (non-SOM) (streaming).....	28
2.2.8	OMD Derivatives Trade Tick (SOM) (streaming).....	28
2.2.9	HKEx OMD Retransmission Unicast Connectivity	29
2.3	Individual Client Configuration Details	29
3.	Guidelines on SDNet/2 lines / HSN connection	30
3.1	Mode of OMD connection	30
3.2	Bandwidth Requirement.....	30
3.3	Sharing of SDNet/2 lines or HSN port set	31
3.4	Bandwidth for shared SDNet/2 lines or HSN port set.....	32
3.5	SDNet/2 High Performance Option	32
4.	Other Guidelines on OMD Connections	33
4.1	Additional Login IDs/Client IP addresses for Unicast Retransmission Service.....	33
4.2	Installation of SDNet/2 and HSN lines	33
4.2.1	SDNet/2 lines.....	33
4.2.2	HSN lines.....	33
	Appendix A – SDNet/2 Accredited Vendors Information	34
	Appendix B Sample Client Configuration Information	37

1. Overview

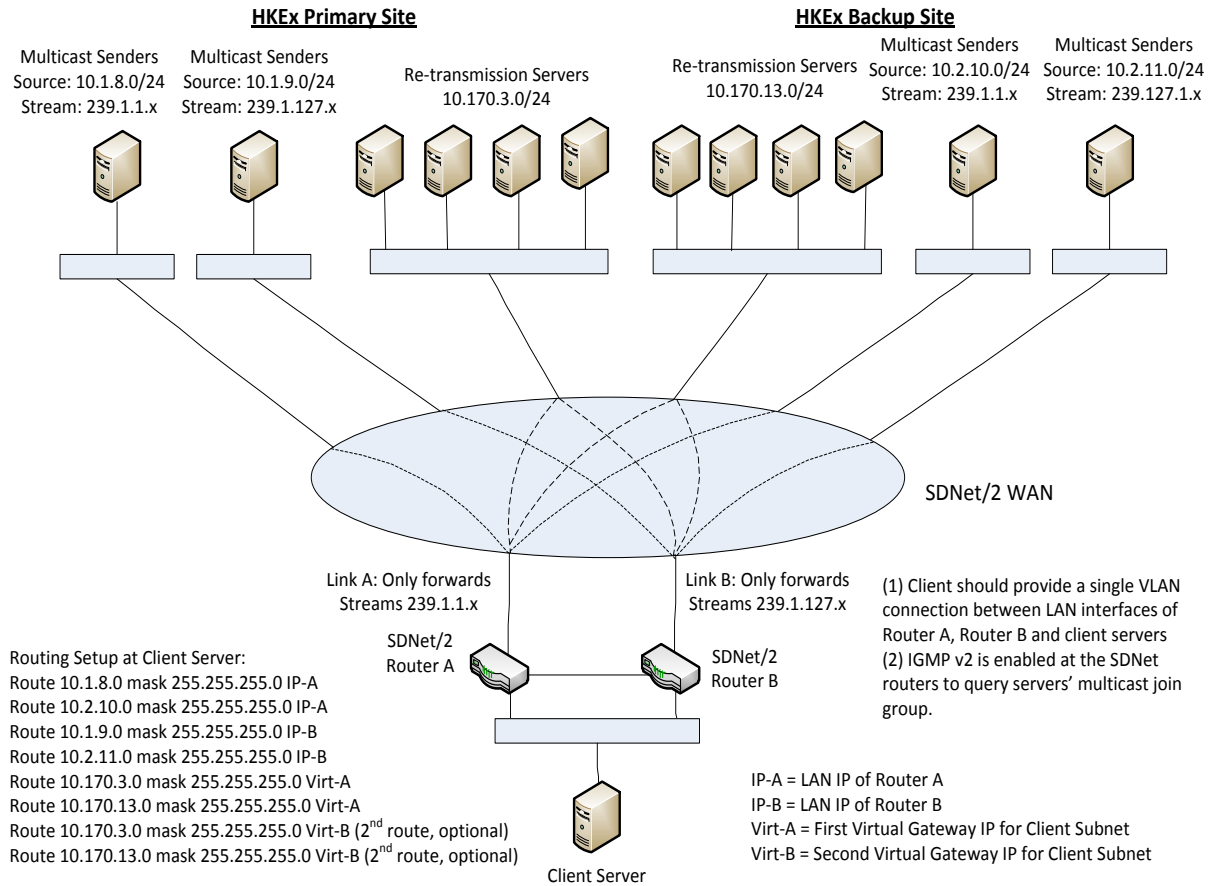
This document aims to provide network configuration information and guidance to assist information vendors and end-users ("clients") in setting up their networks for making connection to OMD-D testing and production environments.

This document contains:

- Configuration information, i.e. IP addresses of the channels assigned for each of the OMD datafeed products in OMD Production environment and Open/Readiness Test environment
- Guidelines / policies for SDNet/2 and HSN connection

2. Configuration Information

OMD adopts multicast transmission protocol for real-time data transmission with retransmission recovery service running on Unicast. Clients are required to set correct network configurations in order to establish proper connection to the corresponding OMD multicast server and retransmission server. Below is a sample connection diagram which provides an overview of SDNet/2 network connection to OMD for reference.



For OMD connection via SDNet/2, a client system has to set up routing to the HKEx host subnets as the diagram depicted. To receive multicast stream, IGMP version 2 is employed at the SDNet/2 routers to query the multicast groups which the client system subscribes. The client system should enable the IGMP function and issue join messages to the SDNet/2 routers for the entitled multicast groups.

For OMD connection by co-location at HKEx Host Data Centre (HDC), clients are required to provide their own routers to connect to the HKEx network. The protocols used in HDC network are BGP4 and Multicast PIM sparse mode. For details, please refer to the Interface Specification on Connectivity Services and Timing Service of HKEx Hosting or contact HKEx Hosting Services team via email hostingservices@hkex.com.hk.

Since the physical speed of an SDNet/2 circuit is 1Gbps, the interface of a client end LAN switch and the client end server has to be 1Gbps in order to prevent packet drops in case of multicast packet burst. To connect with SDNet/2 routers, interface of the LAN switch should be configured with speed as "auto-sense" and duplex mode as "auto-sense" and "auto-negotiation". Then, when the link comes up, the corresponding interface of the LAN switch should learn 1Gbps and full duplex.

The client systems are required to subscribe to the multicast addresses and port IDs for the subscribed OMD products according to multicast channel subscriptions as listed in Section 2.1 for production environment or as listed in Section 2.2 for Open/Readiness Test environment. Clients should not subscribe to other multicast addresses and port IDs not specified in this Connectivity Guide, otherwise it will result in receiving non OMD packets.

2.1 Production Environment Connectivity Details

Note 1 :

In OMD-D, partition assignment follows the exact arrangement in Genium. Market numbers 1 to 20 are assigned to Partition 1, and the market number above 20 are assigned to Partition 2.

Partition Number	Markets ID
1	1 – 20
2	21 - 255

The above partitioning is subject to change by market operation development.

Note 2:

The below glossary applies to the following sections

SOM	Stock Option Market
Non-SOM	Non-Stock Option Market
EAS	Estimated Average Settlement
COP	Calculated Opening Price

2.1.1 OMD Derivatives Standard (non-SOM) (conflated)

		Real-time Market Data Services		Refresh Snapshot Data Services	
Multicast Service	Contents	Channel ID	Multicast Channel Subscriptions	Channel ID	Multicast Channel Subscriptions
Derivatives Non-SOM Series Definition Reference Data Channel (Partition 1)	Series Definition Base (303)	101	A: 239.1.1.128:51001 B: 239.1.127.128:51001	601	A: 239.1.1.153:51001 B: 239.1.127.153:51001
	Combination Definition (305)				
Derivatives Non-SOM Series Definition Reference Data Channel (Partition 2)	Series Definition Base (303)	201	A: 239.1.1.128:51002 B: 239.1.127.128:51002	701	A: 239.1.1.153:51002 B: 239.1.127.153:51002
	Combination Definition (305)				
Derivatives Non-SOM Series Definition Reference Data Channel	Commodity Definition (301)	151	A: 239.1.1.128:51003 B: 239.1.127.128:51003	651	A: 239.1.1.153:51003 B: 239.1.127.153:51003
	Class Definition (302)				
	Series Definition Extended (304)				
Derivatives Non-SOM Series & Market Status Channel	Market Status (320)	161	A: 239.1.1.128:51004 B: 239.1.127.128:51004	661	A: 239.1.1.153:51004 B: 239.1.127.153:51004
	Series Status (321)				
	Commodity Status (322)				
Derivatives Non-SOM Quote Request Channel	Quote Request (336)	164	A: 239.1.1.128:51005 B: 239.1.127.128:51005		
Non-SOM Open Interest Channel	Open Interest (366)	191	A: 239.1.1.128:51006 B:	691	A: 239.1.1.153:51006 B: 239.1.127.153:51006

239.1.127.128:51006					
Derivatives Non-SOM Level 2 Price and COP (Partition 1) Channel	Calculated Opening Price (364) Aggregate Order Book Update (353)	134	A: 239.1.1.132:51001 B: 239.1.127.132:51001	634	A: 239.1.1.157:51001 B: 239.1.127.157:51001
Derivatives Non-SOM Level 2 Price and COP (Partition 2) Channel	Calculated Opening Price (364) Aggregate Order Book Update (353)	234	A: 239.1.1.132:51002 B: 239.1.127.132:51002	734	A: 239.1.1.157:51002 B: 239.1.127.157:51002
Derivatives Non-SOM Trade Statistic Channel	Trade Statistic (360)	171	A: 239.1.1.132:51003 B: 239.1.127.132:51003	671	A: 239.1.1.157:51003 B: 239.1.127.157:51003
Derivatives Non-SOM Trade Statistic Supplement Channel	Trade Statistic (360)	181	A: 239.1.1.132:51004 B: 239.1.127.132:51004	681	A: 239.1.1.157:51004 B: 239.1.127.157:51004
Derivatives Non-SOM Market Alert Channel	Market Alert (323)	177	A: 239.1.1.144:51000 B: 239.1.127.144:51000	677	A: 239.1.1.169:51000 B: 239.1.127.169:51000
EAS Channel	EAS Price (365)	199	A: 239.1.1.143:51000 B: 239.1.127.143:51000	699	A: 239.1.1.168:51000 B: 239.1.127.168:51000

2.1.2 OMD Derivatives Standard (SOM) (conflated)

		Real-time Market Data Services		Refresh Snapshot Data Services	
Multicast Service	Contents	Channel ID	Multicast Channel Subscriptions	Channel ID	Multicast Channel Subscriptions
Derivatives SOM Series Definition Reference Data Channel (Partition 1)	Series Definition Base (303)	102	A: 239.1.1.133:51001 B: 239.1.127.133:51001	602	A: 239.1.1.158:51001 B: 239.1.127.158:51001
	Combination Definition (305)				
Derivatives SOM Series Definition Reference Data Channel (Partition 2)	Series Definition Base (303)	202	A: 239.1.1.133:51002 B: 239.1.127.133:51002	702	A: 239.1.1.158:51002 B: 239.1.127.158:51002
	Combination Definition (305)				
Derivatives SOM Series Definition Reference Data Channel	Commodity Definition (301)	152	A: 239.1.1.133:51003 B: 239.1.127.133:51003	652	A: 239.1.1.158:51003 B: 239.1.127.158:51003
	Class Definition (302)				
	Series Definition Extended (304)				
Derivatives SOM Series & Market Status Channel	Market Status (320)	162	A: 239.1.1.133:51004 B: 239.1.127.133:51004	662	A: 239.1.1.158:51004 B: 239.1.127.158:51004
	Series Status (321)				
	Commodity Status (322)				
Derivatives SOM Quote Request Channel	Quote Request (336)	165	A: 239.1.1.133:51005 B: 239.1.127.133:51005		
SOM Open Interest Channel	Open Interest (366)	192	A: 239.1.1.133:51006 B: 239.1.127.133:51006	692	A: 239.1.1.158:51006 B: 239.1.127.158:51006
Derivatives SOM Level 2 Price and COP (Partition 1) Channel	Calculated Opening Price (364)	135	A: 239.1.1.137:51001 B: 239.1.127.137:51001	635	A: 239.1.1.162:51001 B: 239.1.127.162:51001
	Aggregate Order Book Update (353)				
Derivatives SOM Level 2 Price and COP (Partition 2) Channel	Calculated Opening Price (364)	235	A: 239.1.1.137:51002 B: 239.1.127.137:51002	735	A: 239.1.1.162:51002 B: 239.1.127.162:51002
	Aggregate Order Book Update (353)				
Derivatives SOM Trade Statistic Channel	Trade Statistic (360)	172	A: 239.1.1.137:51003 B: 239.1.127.137:51003	672	A: 239.1.1.162:51003 B: 239.1.127.162:51003
Derivatives SOM Trade Statistic Supplement Channel	Trade Statistic (360)	182	A: 239.1.1.137:51004 B: 239.1.127.137:51004	682	A: 239.1.1.162:51004 B: 239.1.127.162:51004
Derivatives SOM Market Alert	Market Alert (323)	177	A: 239.1.1.144:51000 B:	677	A: 239.1.1.169:51000 B: 239.1.127.169:51000

Channel	239.1.127.144:51000				
EAS Channel	EAS Price (365)	199	A: 239.1.1.143:51000 B: 239.1.127.143:51000	699	A: 239.1.1.168:51000 B: 239.1.127.168:51000

2.1.3 OMD Derivatives Premium (non-SOM) (streaming)

Multicast Service	Contents	Real-time Market Data Services		Refresh Snapshot Data Services	
		Channel ID	Multicast Channel Subscriptions	Channel ID	Multicast Channel Subscriptions
Derivatives Non-SOM Series Definition Reference Data Channel (Partition 1)	Series Definition Base (303) Combination Definition (305)	101	A: 239.1.1.128:51001 B: 239.1.127.128:51001	601	A: 239.1.1.153:51001 B: 239.1.127.153:51001
Derivatives Non-SOM Series Definition Reference Data Channel (Partition 2)	Series Definition Base (303) Combination Definition (305)	201	A: 239.1.1.128:51002 B: 239.1.127.128:51002	701	A: 239.1.1.153:51002 B: 239.1.127.153:51002
Derivatives Non-SOM Series Definition Reference Data Channel	Commodity Definition (301) Class Definition (302) Series Definition Extended (304)	151	A: 239.1.1.128:51003 B: 239.1.127.128:51003	651	A: 239.1.1.153:51003 B: 239.1.127.153:51003
Derivatives Non-SOM Series & Market Status Channel	Market Status (320) Series Status (321) Commodity Status (322)	161	A: 239.1.1.128:51004 B: 239.1.127.128:51004	661	A: 239.1.1.153:51004 B: 239.1.127.153:51004
Derivatives Non-SOM Quote Request Channel	Quote Request (336)	164	A: 239.1.1.128:51005 B: 239.1.127.128:51005		
Non-SOM Open Interest Channel	Open Interest (366)	191	A: 239.1.1.128:51006 B: 239.1.127.128:51006	691	A: 239.1.1.153:51006 B: 239.1.127.153:51006
Derivatives Non-SOM Level 2 Price and COP (Partition 1) Channel	Calculated Opening Price (364) Aggregate Order Book Update (353) Trade (350)	131	A: 239.1.1.131:51001 B: 239.1.127.131:51001	631	A: 239.1.1.156:51001 B: 239.1.127.156:51001
Derivatives Non-SOM Level 2 Price and COP (Partition 2) Channel	Calculated Opening Price (364) Aggregate Order Book Update (353) Trade (350)	231	A: 239.1.1.131:51002 B: 239.1.127.131:51002	731	A: 239.1.1.156:51002 B: 239.1.127.156:51002
Derivatives Non-SOM Trade	Trade (350) Trade Amendment	167	A: 239.1.1.139:51000 B:		

Adjustment Channel	(356)		239.1.127.139:51000		
Derivatives Non-SOM Series Statistic Channel	Series Statistics (363)	174	A: 239.1.1.131:51003 B: 239.1.127.131:51003	674	A: 239.1.1.156:51003 B: 239.1.127.156:51003
Derivatives Non-SOM Series Statistic Supplement Channel	Series Statistics (363)	184	A: 239.1.1.131:51004 B: 239.1.127.131:51004	684	A: 239.1.1.156:51004 B: 239.1.127.156:51004
Derivatives Non-SOM Market Alert Channel	Market Alert (323)	177	A: 239.1.1.144:51000 B: 239.1.127.144:51000	677	A: 239.1.1.169:51000 B: 239.1.127.169:51000
EAS Channel	EAS Price (365)	199	A: 239.1.1.143:51000 B: 239.1.127.143:51000	699	A: 239.1.1.168:51000 B: 239.1.127.168:51000
Implied Volatility Channel	Implied Volatility (367)	194	A: 239.1.1.141:51000 B: 239.1.127.141:51000	694	A: 239.1.1.166:51000 B: 239.1.127.166:51000

2.1.4 OMD Derivatives Premium (SOM) (streaming)

Multicast Service	Contents	Real-time Market Data Services		Refresh Snapshot Data Services	
		Channel ID	Multicast Channel Subscriptions	Channel ID	Multicast Channel Subscriptions
Derivatives SOM Series Definition Reference Data Channel (Partition 1)	Series Definition Base (303) Combination Definition (305)	102	A: 239.1.1.133:51001 B: 239.1.127.133:51001	602	A: 239.1.1.158:51001 B: 239.1.127.158:51001
Derivatives SOM Series Definition Reference Data Channel (Partition 2)	Series Definition Base (303) Combination Definition (305)	202	A: 239.1.1.133:51002 B: 239.1.127.133:51002	702	A: 239.1.1.158:51002 B: 239.1.127.158:51002
Derivatives SOM Series Definition Reference Data Channel	Commodity Definition (301) Class Definition (302) Series Definition Extended (304)	152	A: 239.1.1.133:51003 B: 239.1.127.133:51003	652	A: 239.1.1.158:51003 B: 239.1.127.158:51003
Derivatives SOM Series & Market Status Channel	Market Status (320) Series Status (321) Commodity Status (322)	162	A: 239.1.1.133:51004 B: 239.1.127.133:51004	662	A: 239.1.1.158:51004 B: 239.1.127.158:51004
Derivatives SOM Quote Request Channel	Quote Request (336)	165	A: 239.1.1.133:51005 B: 239.1.127.133:51005		
SOM Open Interest Channel	Open Interest (366)	192	A: 239.1.1.133:51006 B: 239.1.127.133:51006	692	A: 239.1.1.158:51006 B: 239.1.127.158:51006
Derivatives SOM Level 2 Price and COP (Partition 1) Channel	Calculated Opening Price (364) Aggregate Order Book Update (353) Trade (350)	132	A: 239.1.1.136:51001 B: 239.1.127.136:51001	632	A: 239.1.1.161:51001 B: 239.1.127.161:51001
Derivatives SOM Level 2 Price and COP (Partition 2) Channel	Calculated Opening Price (364) Aggregate Order Book Update (353) Trade (350)	232	A: 239.1.1.136:51002 B: 239.1.127.136:51002	732	A: 239.1.1.161:51002 B: 239.1.127.161:51002
Derivatives SOM Trade Adjustment Channel	Trade (350) Trade Amendment (356)	168	A: 239.1.1.140:51000 B: 239.1.127.140:51000		

Derivatives SOM Series Statistic Channel	Series Statistics (363)	175	A: 239.1.1.136:51003 B: 239.1.127.136:51003	675	A: 239.1.1.161:51003 B: 239.1.127.161:51003
Derivatives SOM Series Statistic Supplement Channel	Series Statistics (363)	185	A: 239.1.1.136:51004 B: 239.1.127.136:51004	685	A: 239.1.1.161:51004 B: 239.1.127.161:51004
Derivatives SOM Market Alert Channel	Market Alert (323)	177	A: 239.1.1.144:51000 B: 239.1.127.144:51000	677	A: 239.1.1.169:51000 B: 239.1.127.169:51000
EAS Channel	EAS Price (365)	199	A: 239.1.1.143:51000 B: 239.1.127.143:51000	699	A: 239.1.1.168:51000 B: 239.1.127.168:51000
Implied Volatility Channel	Implied Volatility (367)	195	A: 239.1.1.142:51000 B: 239.1.127.142:51000	695	A: 239.1.1.167:51000 B: 239.1.127.167:51000

2.1.5 OMD Derivatives Full Tick (non-SOM) (streaming)

Multicast Service	Contents	Real-time Market Data Services		Refresh Snapshot Data Services	
		Channel ID	Multicast Channel Subscriptions	Channel ID	Multicast Channel Subscriptions
Derivatives Non-SOM Series Definition Reference Data Channel (Partition 1)	Series Definition Base (303) Combination Definition (305)	101	A: 239.1.1.128:51001 B: 239.1.127.128:51001	601	A: 239.1.1.153:51001 B: 239.1.127.153:51001
Derivatives Non-SOM Series Definition Reference Data Channel (Partition 2)	Series Definition Base (303) Combination Definition (305)	201	A: 239.1.1.128:51002 B: 239.1.127.128:51002	701	A: 239.1.1.153:51002 B: 239.1.127.153:51002
Derivatives Non-SOM Series Definition Reference Data Channel	Commodity Definition (301) Class Definition (302) Series Definition Extended (304)	151	A: 239.1.1.128:51003 B: 239.1.127.128:51003	651	A: 239.1.1.153:51003 B: 239.1.127.153:51003
Derivatives Non-SOM Series & Market Status Channel	Market Status (320) Series Status (321) Commodity Status (322)	161	A: 239.1.1.128:51004 B: 239.1.127.128:51004	661	A: 239.1.1.153:51004 B: 239.1.127.153:51004
Derivatives Non-SOM Quote Request Channel	Quote Request (336)	164	A: 239.1.1.128:51005 B: 239.1.127.128:51005		
Derivatives Non-SOM Order, COP and Trade (Partition 1)	Calculated Opening Price (364) Add Order (330) Modify Order (331) Delete Order (332) Orderbook Clear (335) Trade (350)	121	A: 239.1.1.130:51001 B: 239.1.127.130:51001	621	A: 239.1.1.155:51001 B: 239.1.127.155:51001
Derivatives Non-SOM Order, COP and Trade (Partition 2)	Calculated Opening Price (364) Add Order (330) Modify Order (331) Delete Order (332) Orderbook Clear	221	A: 239.1.1.130:51002 B: 239.1.127.130:51002	721	A: 239.1.1.155:51002 B: 239.1.127.155:51002

	(335)				
	Trade (350)				
Derivatives Non-SOM Trade Adjustment Channel	Trade (350) Trade Amendment (356)	167	A: 239.1.1.139:51000 B: 239.1.127.139:51000		
Derivatives Non-SOM Market Alert Channel	Market Alert (323)	177	A: 239.1.1.144:51000 B: 239.1.127.144:51000	677	A: 239.1.1.169:51000 B: 239.1.127.169:51000

2.1.6 OMD Derivatives Full Tick (SOM) (streaming)

Multicast Service	Contents	Real-time Market Data Services		Refresh Snapshot Data Services	
		Channel ID	Multicast Channel Subscriptions	Channel ID	Multicast Channel Subscriptions
Derivatives SOM Series Definition Reference Data Channel (Partition 1)	Series Definition Base (303) Combination Definition (305)	102	A: 239.1.1.133:51001 B: 239.1.127.133:51001	602	A: 239.1.1.158:51001 B: 239.1.127.158:51001
Derivatives SOM Series Definition Reference Data Channel (Partition 2)	Series Definition Base (303) Combination Definition (305)	202	A: 239.1.1.133:51002 B: 239.1.127.133:51002	702	A: 239.1.1.158:51002 B: 239.1.127.158:51002
Derivatives SOM Series Definition Reference Data Channel	Commodity Definition (301) Class Definition (302) Series Definition Extended (304)	152	A: 239.1.1.133:51003 B: 239.1.127.133:51003	652	A: 239.1.1.158:51003 B: 239.1.127.158:51003
Derivatives SOM Series & Market Status Channel	Market Status (320) Series Status (321) Commodity Status (322)	162	A: 239.1.1.133:51004 B: 239.1.127.133:51004	662	A: 239.1.1.158:51004 B: 239.1.127.158:51004
Derivatives SOM Quote Request Channel	Quote Request (336)	165	A: 239.1.1.133:51005 B: 239.1.127.133:51005		
Derivatives SOM Order, COP and Trade (Partition 1)	Calculated Opening Price (364) Add Order (330) Modify Order (331) Delete Order (332) Orderbook Clear (335) Trade (350)	122	A: 239.1.1.135:51001 B: 239.1.127.135:51001	622	A: 239.1.1.160:51001 B: 239.1.127.160:51001
Derivatives SOM Order, COP and Trade (Partition 2)	Calculated Opening Price (364) Add Order (330) Modify Order (331) Delete Order (332) Orderbook Clear (335) Trade (350)	222	A: 239.1.1.135:51002 B: 239.1.127.135:51002	722	A: 239.1.1.160:51002 B: 239.1.127.160:51002

Derivatives SOM Trade Adjustment Channel	Trade (350) Trade Amendment (356)	168	A: 239.1.1.140:51000 B: 239.1.127.140:51000		
Derivatives SOM Market Alert Channel	Market Alert (323)	177	A: 239.1.1.144:51000 B: 239.1.127.144:51000	677	A: 239.1.1.169:51000 B: 239.1.127.169:51000

2.1.7 OMD Derivatives Trade Tick (non-SOM) (streaming)

Multicast Service	Contents	Real-time Market Data Services		Refresh Snapshot Data Services	
		Channel ID	Multicast Channel Subscriptions	Channel ID	Multicast Channel Subscriptions
Derivatives Non-SOM Trade Channel (Partition 1)	Trade (350)	111	A: 239.1.1.129:51001 B: 239.1.127.129:51001		
Derivatives Non-SOM Trade Channel (Partition 2)	Trade (350)	211	A: 239.1.1.129:51002 B: 239.1.127.129:51002		
Derivatives Non-SOM Trade Adjustment Channel	Trade (350) Trade Amendment (356)	167	A: 239.1.1.139:51000 B: 239.1.127.139:51000		

2.1.8 OMD Derivatives Trade Tick (SOM) (streaming)

Multicast Service	Contents	Real-time Market Data Services		Refresh Snapshot Data Services	
		Channel ID	Multicast Channel Subscriptions	Channel ID	Multicast Channel Subscriptions
Derivatives SOM Trade Channel (Partition 1)	Trade (350)	112	A: 239.1.1.134:51001 B: 239.1.127.134:51001		
Derivatives SOM Trade Channel (Partition 2)	Trade (350)	212	A: 239.1.1.134:51002 B: 239.1.127.134:51002		
Derivatives SOM Trade Adjustment Channel	Trade (350) Trade Amendment (356)	168	A: 239.1.1.140:51000 B: 239.1.127.140:51000		

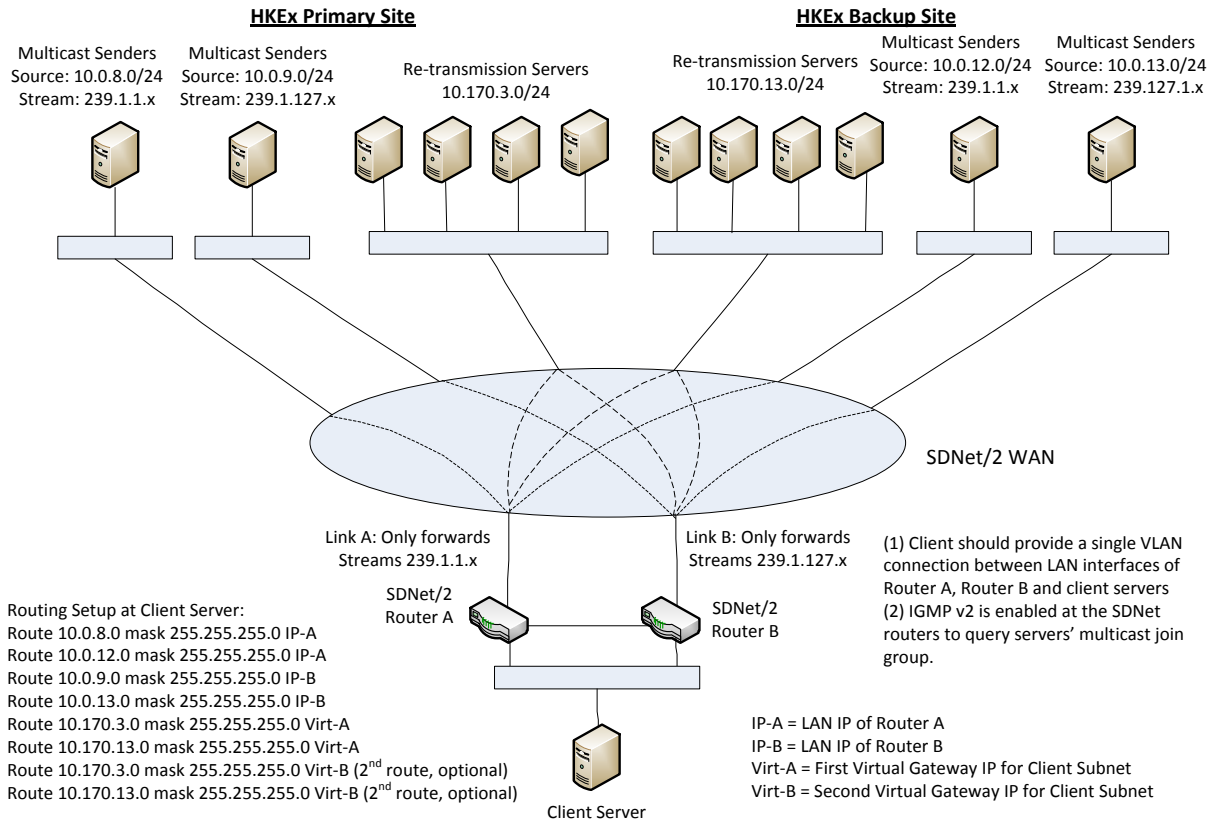
2.1.9 HKEx OMD Retransmission Unicast Connectivity

HKEx provides a Retransmission Service to its OMD clients to recover lost multicast packet. Functional details of the Retransmission Service are provided in the Interface Specification. Find below the Unicast Addresses to connect to the OMD Retransmission Servers in production environment.

Retransmission Server	IP Unicast Address
Primary server in primary site	10.170.3.121:55455
Secondary server in primary site	10.170.3.122:55455
Primary server in DR site	10.170.13.121:55455
Secondary server in DR site	10.170.13.122:55455

2.2 Open/Readiness Test Environment Connectivity Details

For Open/Readiness Test Environment, the network configuration is basically the same as the Production Environment described in session 2.1 except that the multicast source IP segments are 10.0.8.0/24, 10.0.9.0/24, 10.0.12.0/24 and 10.0.13.0/24. The diagram of the network is shown below:



Network Configuration for Open Test Environment

2.2.1 OMD Derivatives Standard (non-SOM) (conflated)

Multicast Service	Contents	Real-time Market Data Services		Refresh Snapshot Data Services	
		Channel ID	Multicast Channel Subscriptions	Channel ID	Multicast Channel Subscriptions
Derivatives Non-SOM Series Definition Reference Data Channel (Partition 1)	Series Definition Base (303)	101	A: 239.1.1.181:53001 B: 239.1.127.181:53001	601	A: 239.1.1.206:53001 B: 239.1.127.206:53001
	Combination Definition (305)				
Derivatives Non-SOM Series Definition Reference Data Channel (Partition 2)	Series Definition Base (303)	201	A: 239.1.1.181:53002 B: 239.1.127.181:53002	701	A: 239.1.1.206:53002 B: 239.1.127.206:53002
	Combination Definition (305)				
Derivatives Non-	Commodity Definition	151	A: 239.1.1.181:53003	651	A: 239.1.1.206:53003

SOM Series Definition Reference Data Channel	(301) Class Definition (302) Series Definition Extended (304)		B: 239.1.127.181:53003		B: 239.1.127.206:53003
Derivatives Non-SOM Series & Market Status Channel	Market Status (320) Series Status (321) Commodity Status (322)	161	A: 239.1.1.181:53004 B: 239.1.127.181:53004	661	A: 239.1.1.206:53004 B: 239.1.127.206:53004
Derivatives Non-SOM Quote Request Channel	Quote Request (336)	164	A: 239.1.1.181:53005 B: 239.1.127.181:53005		
Non-SOM Open Interest Channel	Open Interest (366)	191	A: 239.1.1.181:53006 B: 239.1.127.181:53006	691	A: 239.1.1.206:53006 B: 239.1.127.206:53006
Derivatives Non-SOM Level 2 Price and COP (Partition 1) Channel	Calculated Opening Price (364) Aggregate Order Book Update (353)	134	A: 239.1.1.185:53001 B: 239.1.127.185:53001	634	A: 239.1.1.210:53001 B: 239.1.127.210:53001
Derivatives Non-SOM Level 2 Price and COP (Partition 2) Channel	Calculated Opening Price (364) Aggregate Order Book Update (353)	234	A: 239.1.1.185:53002 B: 239.1.127.185:53002	734	A: 239.1.1.210:53002 B: 239.1.127.210:53002
Derivatives Non-SOM Trade Statistic Channel	Trade Statistic (360)	171	A: 239.1.1.185:53003 B: 239.1.127.185:53003	671	A: 239.1.1.210:53003 B: 239.1.127.210:53003
Derivatives Non-SOM Trade Statistic Supplement Channel	Trade Statistic (360)	181	A: 239.1.1.185:53004 B: 239.1.127.185:53004	681	A: 239.1.1.210:53004 B: 239.1.127.210:53004
Derivatives Non-SOM Market Alert Channel	Market Alert (323)	177	A: 239.1.1.197:53000 B: 239.1.127.197:53000	677	A: 239.1.1.222:53000 B: 239.1.127.222:53000
EAS Channel	EAS Price (365)	199	A: 239.1.1.196:53000 B: 239.1.127.196:53000	699	A: 239.1.1.221:53000 B: 239.1.127.221:53000

2.2.2 OMD Derivatives Standard (SOM) (conflated)

		Real-time Market Data Services		Refresh Snapshot Data Services	
Multicast Service	Contents	Channel ID	Multicast Channel Subscriptions	Channel ID	Multicast Channel Subscriptions
Derivatives SOM	Series Definition Base	102	A: 239.1.1.186:53001	602	A: 239.1.1.211:53001

Series Definition Reference Data Channel (Partition 1)	(303) Combination Definition (305)		B: 239.1.127.186:53001		B: 239.1.127.211:53001
Derivatives SOM Series Definition Reference Data Channel (Partition 2)	Series Definition Base (303) Combination Definition (305)	202	A: 239.1.1.186:53002 B: 239.1.127.186:53002	702	A: 239.1.1.211:53002 B: 239.1.127.211:53002
Derivatives SOM Series Definition Reference Data Channel	Commodity Definition (301) Class Definition (302) Series Definition Extended (304)	152	A: 239.1.1.186:53003 B: 239.1.127.186:53003	652	A: 239.1.1.211:53003 B: 239.1.127.211:53003
Derivatives SOM Series & Market Status Channel	Market Status (320) Series Status (321) Commodity Status (322)	162	A: 239.1.1.186:53004 B: 239.1.127.186:53004	662	A: 239.1.1.211:53004 B: 239.1.127.211:53004
Derivatives SOM Quote Request Channel	Quote Request (336)	165	A: 239.1.1.186:53005 B: 239.1.127.186:53005		
SOM Open Interest Channel	Open Interest (366)	192	A: 239.1.1.186:53006 B: 239.1.127.186:53006	692	A: 239.1.1.211:53006 B: 239.1.127.211:53006
Derivatives SOM Level 2 Price and COP (Partition 1) Channel	Calculated Opening Price (364) Aggregate Order Book Update (353)	135	A: 239.1.1.190:53001 B: 239.1.127.190:53001	635	A: 239.1.1.215:53001 B: 239.1.127.215:53001
Derivatives SOM Level 2 Price and COP (Partition 2) Channel	Calculated Opening Price (364) Aggregate Order Book Update (353)	235	A: 239.1.1.190:53002 B: 239.1.127.190:53002	735	A: 239.1.1.215:53002 B: 239.1.127.215:53002
Derivatives SOM Trade Statistic Channel	Trade Statistic (360)	172	A: 239.1.1.190:53003 B: 239.1.127.190:53003	672	A: 239.1.1.215:53003 B: 239.1.127.215:53003
Derivatives SOM Trade Statistic Supplement Channel	Trade Statistic (360)	182	A: 239.1.1.190:53004 B: 239.1.127.190:53004	682	A: 239.1.1.215:53004 B: 239.1.127.215:53004
Derivatives SOM Market Alert Channel	Market Alert (323)	177	A: 239.1.1.197:53000 B: 239.1.127.197:53000	677	A: 239.1.1.222:53000 B: 239.1.127.222:53000
EAS Channel	EAS Price (365)	199	A: 239.1.1.196:53000 B: 239.1.127.196:53000	699	A: 239.1.1.221:53000 B: 239.1.127.221:53000

2.2.3 OMD Derivatives Premium (non-SOM) (streaming)

Multicast Service	Contents	Real-time Market Data Services		Refresh Snapshot Data Services	
		Channel ID	Multicast Channel Subscriptions	Channel ID	Multicast Channel Subscriptions
Derivatives Non-SOM Series Definition Reference Data Channel (Partition 1)	Series Definition Base (303) Combination Definition (305)	101	A: 239.1.1.181:53001 B: 239.1.127.181:53001	601	A: 239.1.1.206:53001 B: 239.1.127.206:53001
Derivatives Non-SOM Series Definition Reference Data Channel (Partition 2)	Series Definition Base (303) Combination Definition (305)	201	A: 239.1.1.181:53002 B: 239.1.127.181:53002	701	A: 239.1.1.206:53002 B: 239.1.127.206:53002
Derivatives Non-SOM Series Definition Reference Data Channel	Commodity Definition (301) Class Definition (302) Series Definition Extended (304)	151	A: 239.1.1.181:53003 B: 239.1.127.181:53003	651	A: 239.1.1.206:53003 B: 239.1.127.206:53003
Derivatives Non-SOM Series & Market Status Channel	Market Status (320) Series Status (321) Commodity Status (322)	161	A: 239.1.1.181:53004 B: 239.1.127.181:53004	661	A: 239.1.1.206:53004 B: 239.1.127.206:53004
Derivatives Non-SOM Quote Request Channel	Quote Request (336)	164	A: 239.1.1.181:53005 B: 239.1.127.181:53005		
Non-SOM Open Interest Channel	Open Interest (366)	191	A: 239.1.1.181:53006 B: 239.1.127.181:53006	691	A: 239.1.1.206:53006 B: 239.1.127.206:53006
Derivatives Non-SOM Level 2 Price and COP (Partition 1) Channel	Calculated Opening Price (364) Aggregate Order Book Update (353) Trade (350)	131	A: 239.1.1.184:53001 B: 239.1.127.184:53001	631	A: 239.1.1.209:53001 B: 239.1.127.209:53001
Derivatives Non-SOM Level 2 Price and COP (Partition 2) Channel	Calculated Opening Price (364) Aggregate Order Book Update (353) Trade (350)	231	A: 239.1.1.184:53002 B: 239.1.127.184:53002	731	A: 239.1.1.209:53002 B: 239.1.127.209:53002
Derivatives Non-SOM Trade	Trade (350) Trade Amendment	167	A: 239.1.1.192:53000 B: 239.1.127.192:53000		

Adjustment Channel	(356)				
Derivatives Non-SOM Series Statistic Channel	Series Statistics (363)	174	A: 239.1.1.184:53003 B: 239.1.127.184:53003	674	A: 239.1.1.209:53003 B: 239.1.127.209:53003
Derivatives Non-SOM Series Statistic Supplement Channel	Series Statistics (363)	184	A: 239.1.1.184:53004 B: 239.1.127.184:53004	684	A: 239.1.1.209:53004 B: 239.1.127.209:53004
Derivatives Non-SOM Market Alert Channel	Market Alert (323)	177	A: 239.1.1.197:53000 B: 239.1.127.197:53000	677	A: 239.1.1.222:53000 B: 239.1.127.222:53000
EAS Channel	EAS Price (365)	199	A: 239.1.1.196:53000 B: 239.1.127.196:53000	699	A: 239.1.1.221:53000 B: 239.1.127.221:53000
Implied Volatility Channel	Implied Volatility (367)	194	A: 239.1.1.194:53000 B: 239.1.127.194:53000	694	A: 239.1.1.219:53000 B: 239.1.127.219:53000

2.2.4 OMD Derivatives Premium (SOM) (streaming)

Multicast Service	Contents	Real-time Market Data Services		Refresh Snapshot Data Services	
		Channel ID	Multicast Channel Subscriptions	Channel ID	Multicast Channel Subscriptions
Derivatives SOM Series Definition Reference Data Channel (Partition 1)	Series Definition Base (303) Combination Definition (305)	102	A: 239.1.1.186:53001 B: 239.1.127.186:53001	602	A: 239.1.1.211:53001 B: 239.1.127.211:53001
Derivatives SOM Series Definition Reference Data Channel (Partition 2)	Series Definition Base (303) Combination Definition (305)	202	A: 239.1.1.186:53002 B: 239.1.127.186:53002	702	A: 239.1.1.211:53002 B: 239.1.127.211:53002
Derivatives SOM Series Definition Reference Data Channel	Commodity Definition (301) Class Definition (302) Series Definition Extended (304)	152	A: 239.1.1.186:53003 B: 239.1.127.186:53003	652	A: 239.1.1.211:53003 B: 239.1.127.211:53003
Derivatives SOM Series & Market Status Channel	Market Status (320) Series Status (321) Commodity Status (322)	162	A: 239.1.1.186:53004 B: 239.1.127.186:53004	662	A: 239.1.1.211:53004 B: 239.1.127.211:53004
Derivatives SOM Quote Request	Quote Request	165	A: 239.1.1.186:53005		

Channel	(336)		B: 239.1.127.186:53005		
SOM Open Interest Channel	Open Interest (366)	192	A: 239.1.1.186:53006 B: 239.1.127.186:53006	692	A: 239.1.1.211:53006 B: 239.1.127.211:53006
Derivatives SOM Level 2 Price and COP (Partition 1) Channel	Calculated Opening Price (364) Aggregate Order Book Update (353) Trade (350)	132	A: 239.1.1.189:53001 B: 239.1.127.189:53001	632	A: 239.1.1.214:53001 B: 239.1.127.214:53001
Derivatives SOM Level 2 Price and COP (Partition 2) Channel	Calculated Opening Price (364) Aggregate Order Book Update (353) Trade (350)	232	A: 239.1.1.189:53002 B: 239.1.127.189:53002	732	A: 239.1.1.214:53002 B: 239.1.127.214:53002
Derivatives SOM Trade Adjustment Channel	Trade (350) Trade Amendment (356)	168	A: 239.1.1.193:53000 B: 239.1.127.193:53000		
Derivatives SOM Series Statistic Channel	Series Statistics (363)	175	A: 239.1.1.189:53003 B: 239.1.127.189:53003	675	A: 239.1.1.214:53003 B: 239.1.127.214:53003
Derivatives SOM Series Statistic Supplement Channel	Series Statistics (363)	185	A: 239.1.1.189:53004 B: 239.1.127.189:53004	685	A: 239.1.1.214:53004 B: 239.1.127.214:53004
Derivatives SOM Market Alert Channel	Market Alert (323)	177	A: 239.1.1.197:53000 B: 239.1.127.197:53000	677	A: 239.1.1.222:53000 B: 239.1.127.222:53000
EAS Channel	EAS Price (365)	199	A: 239.1.1.196:53000 B: 239.1.127.196:53000	699	A: 239.1.1.221:53000 B: 239.1.127.221:53000
Implied Volatility Channel	Implied Volatility (367)	195	A: 239.1.1.195:53000 B: 239.1.127.195:53000	695	A: 239.1.1.220:53000 B: 239.1.127.220:53000

2.2.5 OMD Derivatives Full Tick (non-SOM) (streaming)

Multicast Service	Contents	Real-time Market Data Services		Refresh Snapshot Data Services	
		Channel ID	Multicast Channel Subscriptions	Channel ID	Multicast Channel Subscriptions
Derivatives Non-SOM Series Definition Reference Data Channel	Series Definition Base (303) Combination Definition (305)	101	A: 239.1.1.181:53001 B: 239.1.127.181:53001	601	A: 239.1.1.206:53001 B: 239.1.127.206:53001

(Partition 1)					
Derivatives Non-SOM Series Definition Reference Data Channel (Partition 2)	Series Definition Base (303) Combination Definition (305)	201	A: 239.1.1.181:53002 B: 239.1.127.181:53002	701	A: 239.1.1.206:53002 B: 239.1.127.206:53002
Derivatives Non-SOM Series Definition Reference Data Channel	Commodity Definition (301) Class Definition (302) Series Definition Extended (304)	151	A: 239.1.1.181:53003 B: 239.1.127.181:53003	651	A: 239.1.1.206:53003 B: 239.1.127.206:53003
Derivatives Non-SOM Series & Market Status Channel	Market Status (320) Series Status (321) Commodity Status (322)	161	A: 239.1.1.181:53004 B: 239.1.127.181:53004	661	A: 239.1.1.206:53004 B: 239.1.127.206:53004
Derivatives Non-SOM Quote Request Channel	Quote Request (336)	164	A: 239.1.1.181:53005 B: 239.1.127.181:53005		
Derivatives Non-SOM Order, COP and Trade (Partition 1)	Calculated Opening Price (364) Add Order (330) Modify Order (331) Delete Order (332) Orderbook Clear (335) Trade (350)	121	A: 239.1.1.183:53001 B: 239.1.127.183:53001	621	A: 239.1.1.208:53001 B: 239.1.127.208:53001
Derivatives Non-SOM Order, COP and Trade (Partition 2)	Calculated Opening Price (364) Add Order (330) Modify Order (331) Delete Order (332) Orderbook Clear (335) Trade (350)	221	A: 239.1.1.183:53002 B: 239.1.127.183:53002	721	A: 239.1.1.208:53002 B: 239.1.127.208:53002
Derivatives Non-SOM Trade Adjustment Channel	Trade (350) Trade Amendment (356)	167	A: 239.1.1.192:53000 B: 239.1.127.192:53000		
Derivatives Non-SOM Market	Market Alert (323)	177	A: 239.1.1.197:53000 B: 239.1.127.197:53000	677	A: 239.1.1.222:53000 B: 239.1.127.222:53000

Alert Channel

2.2.6 OMD Derivatives Full Tick (SOM) (streaming)

Multicast Service	Contents	Real-time Market Data Services		Refresh Snapshot Data Services	
		Channel ID	Multicast Channel Subscriptions	Channel ID	Multicast Channel Subscriptions
Derivatives SOM Series Definition Reference Data Channel (Partition 1)	Series Definition Base (303) Combination Definition (305)	102	A: 239.1.1.186:53001 B: 239.1.127.186:53001	602	A: 239.1.1.211:53001 B: 239.1.127.211:53001
Derivatives SOM Series Definition Reference Data Channel (Partition 2)	Series Definition Base (303) Combination Definition (305)	202	A: 239.1.1.186:53002 B: 239.1.127.186:53002	702	A: 239.1.1.211:53002 B: 239.1.127.211:53002
Derivatives SOM Series Definition Reference Data Channel	Commodity Definition (301) Class Definition (302) Series Definition Extended (304)	152	A: 239.1.1.186:53003 B: 239.1.127.186:53003	652	A: 239.1.1.211:53003 B: 239.1.127.211:53003
Derivatives SOM Series & Market Status Channel	Market Status (320) Series Status (321) Commodity Status (322)	162	A: 239.1.1.186:53004 B: 239.1.127.186:53004	662	A: 239.1.1.211:53004 B: 239.1.127.211:53004
Derivatives SOM Quote Request Channel	Quote Request (336)	165	A: 239.1.1.186:53005 B: 239.1.127.186:53005		
Derivatives SOM Order, COP and Trade (Partition 1)	Calculated Opening Price (364) Add Order (330) Modify Order (331) Delete Order (332) Orderbook Clear (335) Trade (350)	122	A: 239.1.1.188:53001 B: 239.1.127.188:53001	622	A: 239.1.1.213:53001 B: 239.1.127.213:53001
Derivatives SOM Order, COP and Trade (Partition 2)	Calculated Opening Price (364) Add Order (330) Modify Order (331)	222	A: 239.1.1.188:53002 B: 239.1.127.188:53002	722	A: 239.1.1.213:53002 B: 239.1.127.213:53002

	Delete Order (332)				
	Orderbook Clear (335)				
	Trade (350)				
Derivatives SOM Trade Adjustment Channel	Trade (350) Trade Amendment (356)	168	A: 239.1.1.193:53000 B: 239.1.127.193:53000		
Derivatives SOM Market Alert Channel	Market Alert (323)	177	A: 239.1.1.197:53000 B: 239.1.127.197:53000	677	A: 239.1.1.222:53000 B: 239.1.127.222:53000

2.2.7 OMD Derivatives Trade Tick (non-SOM) (streaming)

Multicast Service	Contents	Real-time Market Data Services		Refresh Snapshot Data Services	
		Channel ID	Multicast Channel Subscriptions	Channel ID	Multicast Channel Subscriptions
Derivatives Non-SOM Trade Channel (Partition 1)	Trade (350)	111	A: 239.1.1.182:53001 B: 239.1.127.182:53001		
Derivatives Non-SOM Trade Channel (Partition 2)	Trade (350)	211	A: 239.1.1.182:53002 B: 239.1.127.182:53002		
Derivatives Non-SOM Trade Adjustment Channel	Trade (350) Trade Amendment (356)	167	A: 239.1.1.192:53000 B: 239.1.127.192:53000		

2.2.8 OMD Derivatives Trade Tick (SOM) (streaming)

Multicast Service	Contents	Real-time Market Data Services		Refresh Snapshot Data Services	
		Channel ID	Multicast Channel Subscriptions	Channel ID	Multicast Channel Subscriptions
Derivatives SOM Trade Channel (Partition 1)	Trade (350)	112	A: 239.1.1.187:53001 B: 239.1.127.187:53001		
Derivatives SOM Trade Channel (Partition 2)	Trade (350)	212	A: 239.1.1.187:53002 B: 239.1.127.187:53002		
Derivatives SOM Trade Adjustment Channel	Trade (350) Trade Amendment (356)	168	A: 239.1.1.193:53000 B: 239.1.127.193:53000		

2.2.9 HKEx OMD Retransmission Unicast Connectivity

HKEx provides a Retransmission Service to its OMD clients to recover multicast packet loss. Functional details of the Retransmission Service are provided in the Interface Specification. Find below the Unicast Addresses to connect to the OMD Retransmission Servers in test environment.

Retransmission Server	IP Unicast Address
Primary server in primary site	10.170.xx.xx:55455
Secondary server in primary site	10.170.xx.xx:55455
Primary server in DR site	10.170.xx.xx:55455
Secondary server in DR site	10.170.xx.xx:55455

2.3 Individual Client Configuration Details

Individual clients will be provided with the following configuration details for each set of product feed subscription:

- One Retransmission User ID (Username)
- The subnet and subnet mask of the client segment
- Two unicast client allowable IP addresses for connection with re-transmission servers
- Two physical IP addresses and two Virtual IP address of SDNet/2 routers
- HSRP/VRRP groups used by SDNet/2 routers

Individual client testing configuration information will be provided separately prior to the Open Test/Certification Test whilst the client specific production configuration information will be provided upon the client's successful completion of the Certification Test and prior to the Market Rehearsals/Post Release Test. Please refer to Appendix B for an example of Client Configuration information.

3. Guidelines on SDNet/2 lines / HSN connection

3.1 Mode of OMD connection

- For resilience purpose, at least 2 SDNet/2 or HSN lines are required for OMD connection either for individual OMD datafeed product or sharing among different OMD datafeed products.
- The set of 2 SDNet/2 lines is required to locate in the same location. If clients require receiving OMD data in multiple locations, 1 set of 2 SDNet/2 lines is required to install in each location.

3.2 Bandwidth Requirement

Full suite of OMD datafeed products for Derivatives Market data and respective estimated bandwidth requirements are as follows.

Datafeed plus add-ons	Non-SOM	With SOM	With Derivatives Trade ("DT")	With OMD-Index	SDNet/2 High Performance Option*
Derivatives Standard (DS)	4 Mbps	23 Mbps	23Mbps	23Mbps	Not Necessarily Required
Derivatives Premium (DP)	7 Mbps	47 Mbps	N/A	47Mbps	Required
Derivatives FullTick (DF)	6 Mbps	40 Mbps	N/A	40Mbps	Required

* Update rates of individual indices depend on respective index providers.

** High Performance Option of SDNet/2 line is required for streaming feeds.

3.3 Sharing of SDNet/2 lines or HSN port set

Clients may opt to use separated sets or same set of SDNet/2 lines/ HSN ports for receiving data of different OMD datafeed products and other HKEx datafeeds, e.g. PRS subject to certain limitations. Diagram below depicts the OMD connection in shared line mode and separated line mode:

Under the current multicast transmission protocol of OMD, clients are required to establish live-live connections regardless of whether they are connecting through SDNet/2 or HSN Port in HKEx's Hosting site.

Sharing of SDNet/2 lines for different OMD datafeed products and other applications, e.g. PRS is allowed and clients are required to make sure the bandwidth of the SDNet/2 lines is sufficient to support the multiple applications sharing the lines and they are aware of the potential issues for sharing of lines.

Under the Hosting setup, 1 HSN Port Set contains 2 ports which can serve the live-live connections for OMD (multicast application) and live-backup connection for other unicast application, e.g. PRS.

Clients who would like to establish new HSN connection for other unicast applications which are in live-live mode may need to apply for an additional set of HSN circuits, or consider another solution that meets the same resilience requirement.

In addition, clients should note the following policies on sharing of SDNet/2 or HSN lines for OMD datafeed products:

- Sharing of same set of production SDNet/2 / HSN circuits for **more than 1 OMD datafeed products of different markets** (i.e. securities market datafeed and derivatives market datafeed) **is allowed**.
- Sharing of same set of production / HSN circuits for **OMD and existing datafeed products (e.g. PRS) within the same market is allowed after the 2-week stabilisation period of OMD**. However, clients are only allowed to relocate the PRS connection to the newly installed production SDNet/2 / HSN circuits for OMD connection but not the other way round. In other words, existing PRS lines cannot be used for the sharing with OMD connections.
- Sharing of the same SDNet/2 / HSN circuits for both product and testing purposes is **NOT ALLOWED**.
- **Exchange Participants** who would like to **share the same SDNet/2 circuits with trading traffic (orders and trades) and market data traffic** are however **only** allowed to do so if all the traffic **on** the circuits belongs to **the same market** (i.e. either securities market or derivatives market). OMD-Index, which is market neutral, can be carried on the same circuits with securities market or derivatives market. For example, Exchange Participants of cash market may use the same SDNet/2 circuits for their access to OMD-D DS, OMD-Index and HKATS CG.
- Clients should note and consider the followings if they are going to adopt shared line mode:
 - i) In case of failure/interruption of the shared circuits, all datafeed products using this set of circuits will be affected.
 - ii) Troubleshooting for network related issues (e.g. performance, latency or packet loss etc.) will be much more difficult and time consuming and assistance from network carriers and HKEx will be limited in such troubleshooting. Clients must accept this risk in making the line sharing decision.
 - iii) Due to the difference in operating hours and testing windows between securities and derivatives markets, clients should make sure any maintenance/testing of one of the systems does not affect the rest of the systems sharing the same set of circuits.

3.4 Bandwidth for shared SDNet/2 lines or HSN port set

- i) Shared SDNet/2 / HSN circuits must have sufficient bandwidth to support the data transmission of multiple products/devices. Please see below examples for reference:

Example 1: Sharing of a set of SDNet/2 lines for OMD DP and OMD DF:-

The estimated bandwidth requirements for DP and DF are 30Mbps each (with no optional feed), a set of SDNet/2 lines with 60Mbps will be required.

Example 2: Sharing of a set of SDNet/2 lines for OMD DF, PRS:-

The estimated bandwidth requirements for the OMD DF (SOM & non-SOM), PRS are 18Mbps and 7Mbps respectively. The bandwidth for the common set of SDNet/2 lines will therefore be 30Mbps (minimum incremental bandwidth threshold is 10Mbps for SDNet/2 lines of 10Mbps-90Mbps)

- ii) Clients can allocate bandwidth of the shared lines to different products as they wish as long as the bandwidth allocated to each datafeed product meets the estimated bandwidth requirement specified by HKEx.

3.5 SDNet/2 High Performance Option

High Performance Option of SDNet/2 lines which transmits data in relatively higher packet rates is highly recommended for clients who subscribe to OMD streaming feeds, i.e. DP and DF,. Please refer to Appendix A for details on high performance options provided by different SDNet/2 providers.

4. Other Guidelines on OMD Connections

4.1 Additional Login IDs/Client IP addresses for Unicast Retransmission Service

Direct connection clients will get one set of login ID with two IP addresses for retransmission service per OMD-D datafeed subscription. That means, clients subscribing to one set of DP feed and one set of DF feed will get two login IDs each with two IP addresses. These login IDs would be generic ID where each ID can be used to recover either the DP and DF missing data rather than tied to the respective datafeed product associated with that login ID provided that the same pair of SDNet/2 or HSN circuits is used for receiving the data from both DP and DF.

Exchange Participants who are entitled to receive two sets of complimentary DS feed via two different pairs of circuits when migrating to Genium CG would also be entitled to one complimentary login ID per set of DS feed which is also a generic ID.

To facilitate different clients' internal setup or operational requirement, an additional set of login ID and with/without IP addresses for retransmission service can be offered to clients at a cost on a per request basis.

4.2 Installation of SDNet/2 and HSN lines

4.2.1 SDNet/2 lines

Clients are required to contact the SDNet/2 Accredited Vendors for installation of SDNet/2 lines for OMD connection. Details of the SDNet/2 Accredited Vendors and reference costs charged by different SDNet/2 Accredited Vendors can be found in Appendix A.

4.2.2 HSN lines

Clients who will use HKEx's Hosting Service for OMD connection should contact our Hosting Service team directly for details on the HSN lines.

Appendix A – SDNet/2 Accredited Vendors Information

SDNet/2 services are provided by Accredited Vendors for the provision of circuits from EP/CP/IV locations to HKEx's data centres.

To become an Accredited Vendor, the Vendor's SDNet/2 service must comply with the technical requirements set out by HKEx. The compliance of these technical requirements ensures the Accredited Vendor will deliver a stable, reliable and high quality networking services to the EPs/CPs/IVs.

Initially, three Accredited Vendors have been selected and accredited to provide SDNet/2 network services. These vendors are (in alphabetical order):

- Hong Kong Telecommunications (HKT) Limited (also known as PCCW)
- Hutchison Global Communications Limited (HGC)
- Wharf T&T Limited (Wharf T&T)

Price of SDNet/2 Circuit

SDNet/2 services are provided by the Accredited Vendors directly to EPs/CPs/IVs. EPs/CPs/IVs shall apply the services and engage into commercial agreements with the Accredited Vendors directly. However, all Accredited Vendors shall offer SDNet/2 services to EPs/CPs/IVs according to a capped price scheme. Accredited Vendors should offer SDNet/2 services to EPs/CPs/IVs with prices not higher than the capped prices. Prices are applicable to both production circuits and testing circuits.

Note: *All prices provided in this information package are capped price for reference only. EPs/CPs/IVs are advised to contact the respective Accredited Vendors for more information on prices and subscription terms.*

a. One-time Charge for New Circuit Installation

There is no one-time charge for installation of new SDNet/2 circuit.

b. Monthly Charge for Circuit Rental

The following table shows the capped prices of different bandwidth ranges by each Accredited Vendor for circuit rental:

Bandwidth	Capped Price of Monthly Charge for Circuit Rental by Accredited Vendors (per single circuit) ¹		
	PCCW	HGC	Wharf T&T
1M Circuit	≤ HK\$1,300		
2M Circuit	≤ HK\$1,900		
3M Circuit	≤ HK\$2,400		
4M Circuit	≤ HK\$2,900		
5M Circuit	≤ HK\$3,000		
6M Circuit	≤ HK\$3,100		
7M Circuit	≤ HK\$3,200		
8M Circuit	≤ HK\$3,300		
9M Circuit	≤ HK\$3,400		

¹ Prices are on a per circuit basis. A dual-circuit configuration will cost 2 times the cost of a single circuit.

10M Circuit	≤ HK\$3,500		
20M Circuit	≤ HK\$4,500		
30M Circuit	≤ HK\$7,040	≤ HK\$7,800	≤ HK\$5,850
40M Circuit	≤ HK\$8,360	≤ HK\$8,600	≤ HK\$6,750
50M Circuit	≤ HK\$9,680	≤ HK\$9,400	≤ HK\$7,650
60M Circuit	≤ HK\$10,900	≤ HK\$10,200	≤ HK\$7,880
70M Circuit	≤ HK\$12,100	≤ HK\$11,000	≤ HK\$8,410
80M Circuit	≤ HK\$13,300	≤ HK\$11,800	≤ HK\$8,940
90M Circuit	≤ HK\$14,600	≤ HK\$12,700	≤ HK\$9,470
100M Circuit	≤ HK\$15,800	≤ HK\$14,000	≤ HK\$10,000
1G Circuit	≤ HK\$42,200	≤ HK\$32,000	≤ HK\$15,000

c. One-time Charge for Circuit Bandwidth Upgrade/Downgrade/Relocation

The following table shows the charges by each Accredited Vendor for circuit bandwidth upgrade / downgrade / internal relocation / external relocation:

Service	Capped Price of One-time Charge by Accredited Vendors (per circuit)		
	PCCW	HGC	Wharf T&T
Circuit Bandwidth Upgrade /Downgrade ² Charge	HK\$1,500	Free	Free
Internal Relocation ³	HK\$1,500	HK\$1,500	HK\$1,500
External Relocation	1M – 20M:	HK\$5,000	HK\$5,000
	30M – 100M:	HK\$17,760	
	1G:	HK\$44,400	
			HK\$5,000

d. Minimum Subscription Period and Termination Notice

For all SDNet/2 circuits, a minimum subscription period and advance termination notice is applicable.

Minimum Subscription Period	3 months
Advance Termination Notice	1 month

² Circuit bandwidth downgrade may involve contract termination and should subject to related clauses in the contract agreement between EPs/CPs/IVs and the Accredited Vendors

³ Relocation of circuit within the same building

e. SDNet/2 for HKEx Orion Market Data (OMD) Platform

To support OMD streaming feeds, SDNet/2 comes with a High Performance Option, where the circuits can support high data throughput required by the new application. The table below shows the capped prices of different bandwidth ranges of the High Performance Option for reference. Should EPs/CPs/IVs have interested in OMD streaming feeds for cash or derivatives market, more information will be available in HKEx's website in due course.

Bandwidth	Capped Price of Monthly Charge for Circuit Rental by Accredited Vendors (per circuit)		
	PCCW	HGC	Wharf T&T
30M Circuit	≤ HK\$10,560	N/A	≤ HK\$6,410
40M Circuit	≤ HK\$12,540	N/A	≤ HK\$7,310
50M Circuit	≤ HK\$14,520	N/A	≤ HK\$8,210
60M Circuit	≤ HK\$16,350	N/A	≤ HK\$8,440
70M Circuit	≤ HK\$18,150	N/A	≤ HK\$8,970
80M Circuit	≤ HK\$19,950	N/A	≤ HK\$9,500
90M Circuit	≤ HK\$21,900	N/A	≤ HK\$10,030
100M Circuit	≤ HK\$23,700	N/A	≤ HK\$10,560
1G Circuit	≤ HK\$63,300	N/A	≤ HK\$15,560

Appendix B Sample Client Configuration Information

Client End Network Information (Sample):

1	Username	CLIENT1
2	OMD LAN Subnet	10.55.64.0
3	OMD LAN Subnet Mask	255.255.255.224
4	Vendor Allowable IP Address 1 for retransmission	10.55.64.2
5	Vendor Allowable IP Address 2 for retransmission	10.55.64.29
6	SDNet/2 Primary Circuit Number	808311
7	SDNet/2 Router A LAN IP Address (IP-A)	10.55.64.14
8	SDNet/2 Secondary Circuit Number	808312
9	SDNet/2 Router B LAN IP Address (IP-B)	10.55.64.17
10	SDNet/2 OMD LAN 1 st Virtual Gateway IP Address (Virt-A)	10.55.64.1
11	HSRP/VRRP Group Number used by SDNet/2 Router for Virt-A	14
12	SDNet/2 OMD LAN 2 nd Virtual Gateway IP Address (Virt-B)	10.55.64.30
13	HSRP/VRRP Group Number used by SDNet/2 Router for Virt-B	17
14	Multicast Protocol used by SDNet/2 Routers	IGMPv2
15	SDNet/2 Router Physical Interface for OMD	gi1/0/1
16	SDNet/2 Router Port Speed for OMD	Auto Sense up to 1Gbps
17	SDNet/2 Router Port Duplex Mode for OMD	Auto Negotiation
18	IP address ranges usable by Vendors (IP addresses outside these ranges are used and reserved by HKEx)	10.55.64.9-13 10.55.64.18-22
	Note: Vendors can use same set of addresses for Unicast retransmission for the multicast transmission)	

Host End Network Information (Sample):

1	Multicast Source Segment of Stream A in Primary Site forwarded by Vendor SDNet/2 Router A	10.0.80/24
2	Multicast Source Segment of Stream A in Backup Site forwarded by Vendor SDNet/2 Router A	10.0.10.0/24
3	Multicast Source Segment for multicast stream B in Primary Site forwarded by Vendor SDNet/2 Router B	10.0.9.0/24
4	Multicast Source Segment for multicast stream B in Backup Site forwarded by Vendor SDNet/2 Router B	10.0.11.0/24
5	Primary Site Primary Retransmission Server IP Address (Partition 1)	10.170.3.121/24
6	Primary Site Primary Retransmission Server TCP Port Number	55455
7	Primary Site Primary Retransmission Server IP Address (Partition 2)	10.170.3.123/24
8	Primary Site Primary Retransmission Server TCP Port Number	55455
9	Primary Site Secondary Retransmission Server IP Address (Partition 1)	10.170.3.122/24
10	Primary Site Secondary Retransmission Server TCP Port Number	55455
11	Primary Site Secondary Retransmission Server IP Address (Partition 2)	10.170.3.124/24
12	Primary Site Secondary Retransmission Server TCP Port Number	55455
13	Backup Site Primary Retransmission Server IP Address (Partition 1)	10.170.13.121/24
14	Backup Site Primary Retransmission Server TCP Port Number	55455
15	Backup Site Primary Retransmission Server IP Address (Partition 2)	10.170.13.123/24
16	Backup Site Primary Retransmission Server TCP Port Number	55455
17	Backup Site Secondary Retransmission Server IP Address (Partition 1)	10.170.13.122/24
18	Backup Site Secondary Retransmission Server TCP Port Number	55455
19	Backup Site Secondary Retransmission Server IP Address (Partition 2)	10.170.13.124/24
20	Backup Site Secondary Retransmission Server TCP Port Number	55455

